



SARAH KOBAL

.....

Freelance  
Graphic & Web Design

 PORTFOLIO

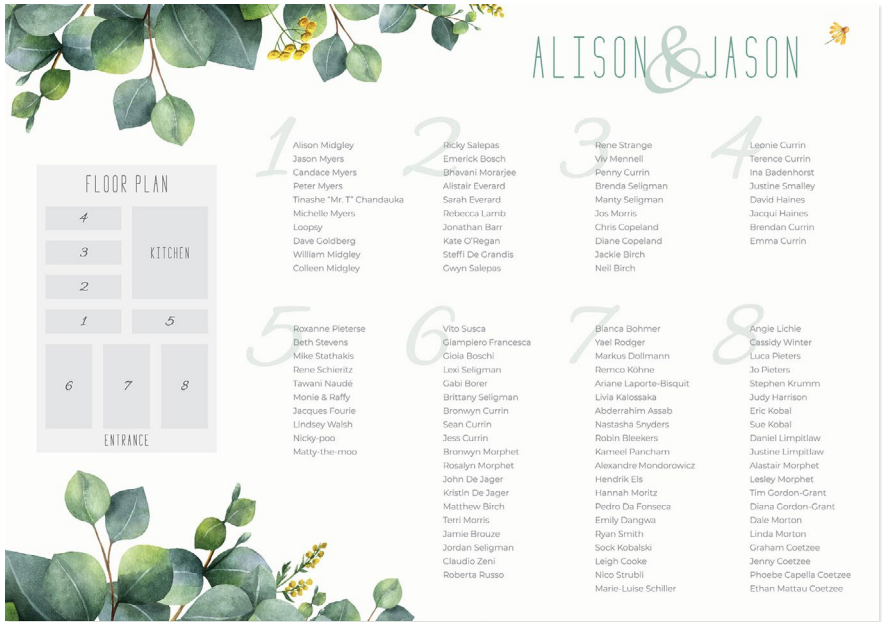
# CORPORATE IDENTITIES



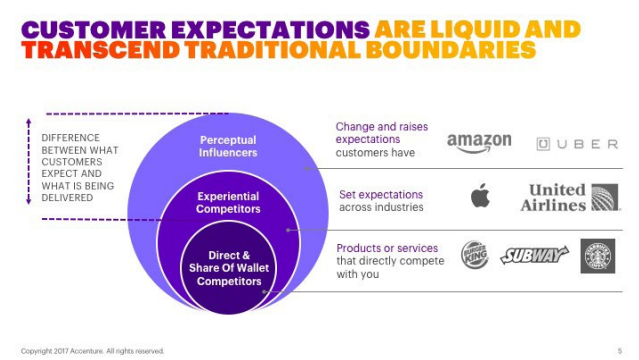
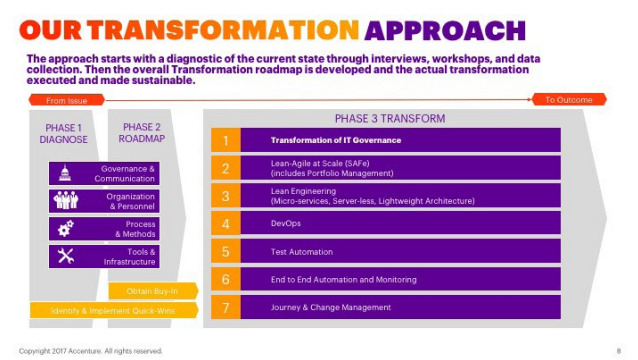
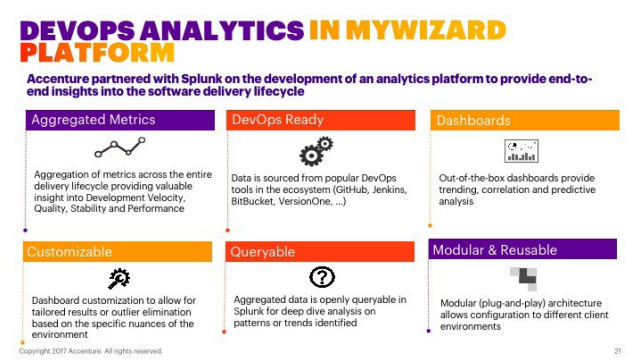
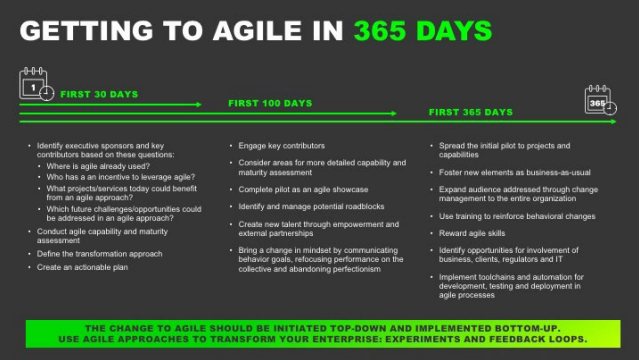
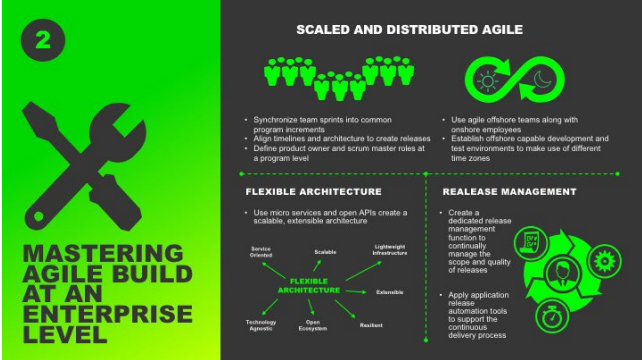
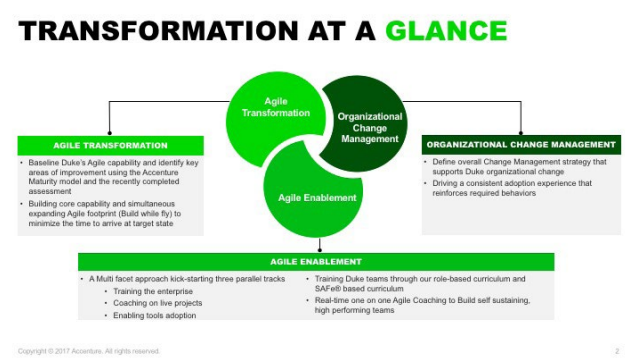
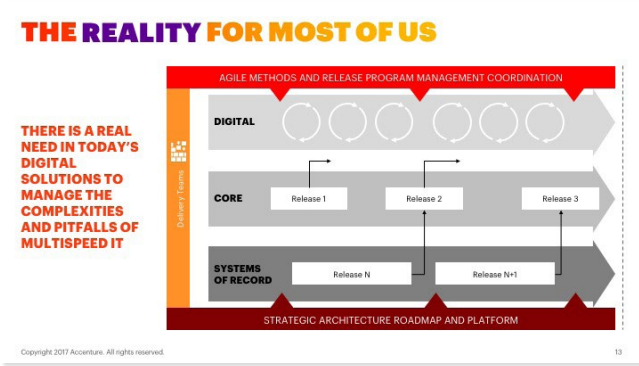




WEDDING STATIONERY







ACCENTURE  
POWERPOINT



# ACCENTURE POWERPOINT & POSTERS



## HOT TOPICS!

We are constantly evolving our topic list based on the needs of Communications, Media and Technology companies. We tailor our workshops to the goals and objectives of our attendees and align them with targeted Digital Acceleration Center assets, including Accenture thought leadership, marketplace case studies, demonstrations and industry domain expertise.



Copyright © 2017 Accenture. All rights reserved.

## THOUGHT LEADERSHIP

We create primary and secondary research focusing specifically on Communications, Media and Technology companies. Our research is designed to identify industry trends and benchmarks, uncover opportunities, and provide a forward-thinking perspective to help you more fully understand the industry, emerging trends, and the needs of customers, partners and/or employees.

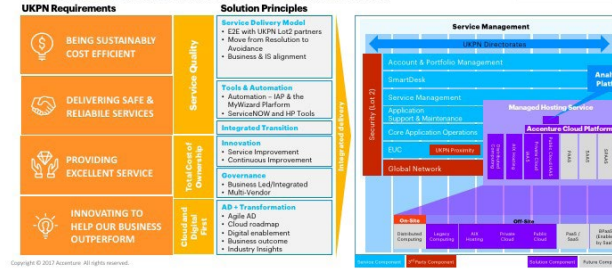


Copyright © 2017 Accenture. All rights reserved.



## Our End to End Solution addresses the Core Requirements of the UKPN delivery

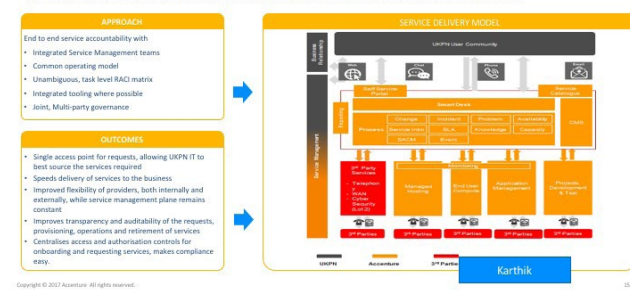
UK Power Networks is a complex set of directorates requiring differentiated services to support individual collaboration across a partner ecosystem to deliver end-to-end business outcomes.



Copyright © 2017 Accenture. All rights reserved.

## SERVICE MANAGEMENT

END TO END, PROACTIVE SERVICE MANAGEMENT WITH CONTINUOUS IMPROVEMENT EMBEDDED AT THE CORE

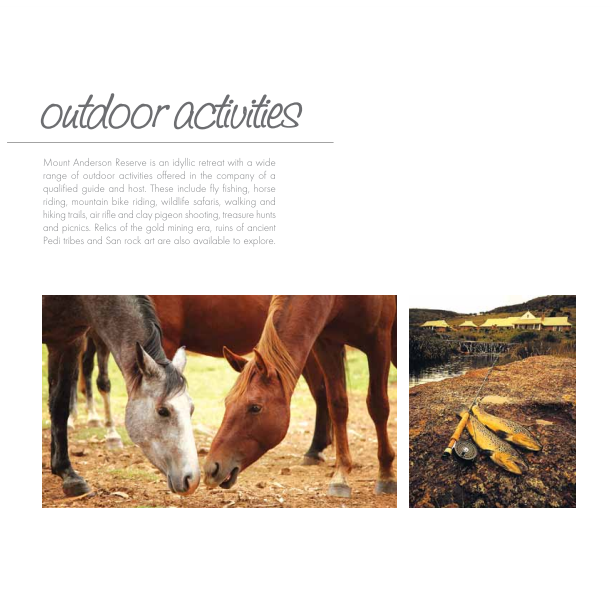
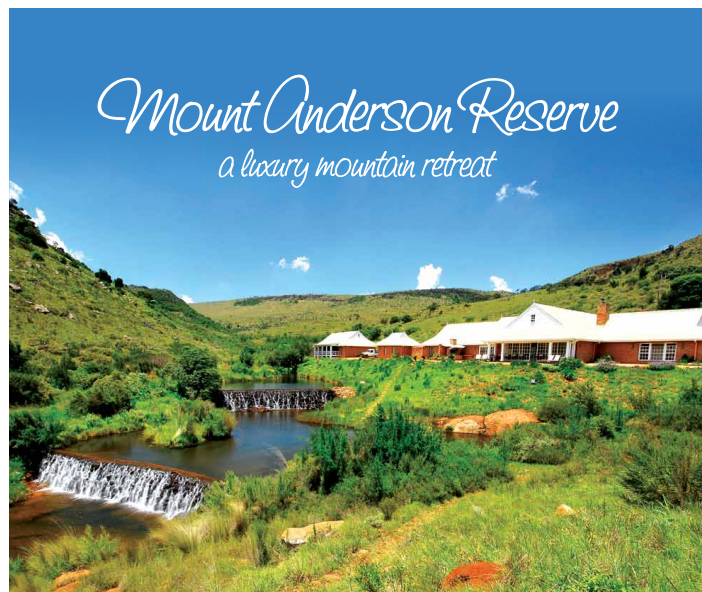


Copyright © 2017 Accenture. All rights reserved.





# BROCHURE DESIGN





On 1 September 2015 Dstv Channel 184 will become **BBC Earth**

BBC Earth inspires audiences by sharing the incredible wonders of our universe. The channel showcases the work of the world's foremost factual film makers as it seeks to take audiences on a thrilling journey of discovery. From the smallest creature under the microscope to the limitless expanses of space, BBC Earth brings viewers face to face with heart pounding action, mind blowing ideas and the wonder of being human.


BBC Earth will be broadcast in HD and will be available exclusively to Dstv Premium customers.

Packed with brand new unmissable programming, the schedules for BBC Earth will showcase World class factual programming. New and exclusive titles on BBC Earth include:

- **David Attenborough meets President Obama** - In this extraordinary television programme, President Barack Obama interviews Sir David Attenborough at the White House. During this candid meeting, they discuss the future of the planet, their passion for nature and what can be done to protect it. Sunday 6 September at 15:00.
- **Life Story** - The latest landmark series and ratings hit from the award-winning BBC Natural History Unit. Narrated by Sir David Attenborough the series delivers the highest quality images ever seen in a wildlife documentary. The series spans the globe telling the remarkable and often perilous story of the journey through life capturing extraordinary moments of resilience and tenacity and never seen before animal behaviours. From Sunday 6 September at 16:00.
- **Life Below Zero** - This eye-opening series follows the drama and hardships experienced by four Alaskan households in different corners of this merciless territory as they battle to make it through a long, dark, freezing winter. From Sunday 6 September at 17:00.
- **Human Universe** - Professor Brian Cox presents Human Universe; the story of humanity told through the greatest questions we've ever asked. Venturing into incredible places across the globe and drawing on the latest scientific theories, the series explores everything from the nature of consciousness and language development to the human need to search deeper into the unknown and our compulsion to discover alien life in the universe. From Sunday 6 September at 18:00.



#BBCEarth | @BBCEarth



**Neil Nightingale**  
Creative Director, BBC Earth


BBC Earth is the global brand for all the BBC's natural history content. In his role Neil leads the creative development of the brand, including producing new forms of commercial content such as feature films, Giant Screen films, 4D experiences, digital projects, live events and immersive exhibitions.

Recent projects from BBC Earth include the Earth Unplugged YouTube channel, the Orbi immersive experience with Sega in Tokyo, the Hidden Kingdoms 3D Giant Screen film and the Earth Journeys travel experience with Tauck. Neil co-directed the major 3D feature film, Walking With Dinosaurs, released globally at Christmas 2013. He recently completed, as co-director and producer Enchanted Kingdom 3D, an ambitious wildlife feature film set in Africa.

Neil was Head of the BBC Natural History Unit from 2003 until 2009, before stepping down to return to programme making and lead BBC Earth's creative development. In that time the NHU produced a diverse range of award winning programmes - around 1000 hours, on television, radio, online and for the cinema, maintaining the BBC's reputation for definitive and ground-breaking factual programmes that inform and entertain audiences. During that time, the Natural History Unit created numerous major television series, including Life, Planet Earth, David Attenborough's Life In Cold Blood and Life In The Undergrowth, Wild China, Big Cat Diary, Elephant Diary, Springwatch, Autumnwatch, Galapagos, Yellowstone and Natural World.

Graduating with a first class degree in Zoology from Oxford University, Neil has always had a passion for the natural world and the species that inhabit our planet, undertaking wildlife expeditions as a student to Borneo and West Africa. After working as a freelance journalist for New Scientist, he joined the BBC in 1983.





**After 10 years of waiting, Planet Earth II is back**

To celebrate **Planet Earth II**, the UK's most watched documentary programme ever, **BBC Worldwide** would like to invite you to an exclusive talk with Series Producer **Fredri Devas**.

The latest series has become a global phenomenon and for one evening only, we would like you to attend a behind-the-scenes experience exclusively at St John's College.


To date, more than **eight million viewers** have watched the **Planet Earth II** trailer on YouTube and over **14 million people** watched the series weekly in the UK- that's a quarter of the entire UK population.

Date: Friday, 20 January 2017  
Time: 18h30 for 19h00 (1 hour talk)  
Venue: St Johns College, Saint David Road, JHB  
RSVP: email address

Entrance is free and refreshments will be provided.

We hope to see you there, for what is sure to be an unforgettable and mind blowing evening!

**PLANET EARTH II**



**After 10 years of waiting, Planet Earth II is back**

To celebrate **Planet Earth II**, the UK's most watched documentary programme ever, **BBC Worldwide** would like to invite you to an exclusive talk with Series Producer **Fredri Devas**.

The latest series has become a global phenomenon and for one evening only, we would like you to attend a behind-the-scenes experience exclusively at St John's College.

To date, more than **eight million viewers** have watched the **Planet Earth II** trailer on YouTube and over **14 million people** watched the series weekly in the UK- that's a quarter of the entire UK population.

Date: Friday, 20 January 2017  
Time: 18h30 for 19h00 (1 hour talk)  
Venue: St Johns College, Saint David Road, JHB  
RSVP: email address

Entrance is free and refreshments will be provided.

We hope to see you there, for what is sure to be an unforgettable and mind blowing evening!

**PLANET EARTH II**



SORBET

## Come *celebrate* at Sorbet Hermanus

Let us spoil you on our birthday!

028 312 2260 or 064 620 4477

Whale Coast Mall, R43,  
Sandbaai, Hermanus



Talk  
Sorbet  
to me...



### OUR ANNUAL SHOPPER EVENT IS BACK!

Valid from 29 – 30 September '17

**FREE  
FACIAL  
VOUCHER**



Buy any 3 Dermalogica, Environ or Guinot products  
and receive a **free facial voucher**.

**Dermalogica**  
Age Smart Facial:

**R570**

**Environ**  
Hands on Vitamin facial:

**R485**

**Guinot**  
Hydradermie Age  
Logic Facial:

**R880**

*the deets*

DATE: 29 – 30 September '17  
TEL: 021 794 6687  
EMAIL: [constantia@sorbet.co.za](mailto:constantia@sorbet.co.za)  
PLACE: Shop 15, Constantia Courtyard,  
Constantia Village, Constantia, Cape Town

www.sorbet.co.za  
constantia@sorbet.co.za

\*Promotion includes all Dermalogica, Environ and Guinot products  
in-store. Promotion does not run in conjunction with any other promo-  
tion. Offer is valid from 29 - 30 September '17 only. Available at Sorbet  
Constantia only. This promotion excludes travel items. T's & C's apply.

ENVIRON

GUINOT

dermalogica



# Fresh is best

Some of your Environ faves have a best before  
use date so we prefer to order these products  
as fresh as possible.

Simply let us know what you need and we'll  
order in.

ENVIRON®



## We offer

facials  
massages  
waxes  
nails  
& more

**Sorbet Hazeldean**

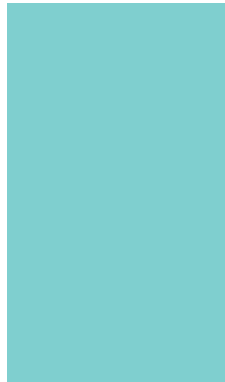
087 094 4138 or  
079 166 2532



ENVIRON® dermalogica







DMK

### THE ULTIMATE FOOT TREATMENT

100% antifungal  
100% antibacterial  
Revive your feet



**DMK**  
Danné Montague-King®

MediPedi®

**DMK**  
Danné Montague-King®

**Get a free mini skin treatment**  
when you book a consultation  
for you & your parent

DMK Skin Revision Clinic  
011 262 6120  
Georgian Place, Block C, 18 Southway Road,  
Kelvin, Eastgate, Sandton, 2090  
Terms & Conditions apply. Offer expires 31 August 2019.





### The Ultimate Foot Treatment

100% antifungal  
100% antibacterial  
Revive your feet



**MediPedi®**  
**DMK**  
Danné Montague-King®

## BETA GEL *is here*



**BETA GEL**  
dmm-beta-gel

BETA GEL is a powerful, liquid serum designed to revise swelling, redness and inflammation of the skin. It is suitable for any type of skin and condition.

BETA GEL is packed with potent Betaglucon plus vitamins and a unique blend of other, powerful ingredients. These ingredients are designed to enhance the defenses of the skin's natural immune system to prevent premature ageing and repair sun-damaged skin.

**BETA GEL is used to treat the following conditions:**

- Acne congested skins and microbial conditions
- Trauma, burns, sutures and staples
- Excellent for pre and post operative clients
- Pre and post IPL, laser, dermabrasion and any resurfacing
- Smokers, slow healers and sluggish skin
- Sun damage, premature ageing and environmentally stressed skins
- Red, reactive and inflamed skin
- Eczema, dermatitis, psoriasis and rosacea

DMK Skin Revision Clinic: 011 262 6120  
Georgian Place, Block C, 18 Southway Road, Kelvin, Eastgate, Sandton, 2090



## Get 20% off when you book a Medipedi Treatment.

Purchase the MediPedi Homecare & get an additional 20% off.

Ts & Cs apply. Valid from 1 May - 31 July 2019.

**MediPedi®**  
**DMK**  
Danné Montague-King®

**VISIBLE RESULTS**

Flush out toxins from your skin




**DMK**  
Danné Montague-King®



### Enzyme Therapy Review

**DMK**  
Danné Montague-King®



### Sensitive skin

**DMK**  
Danné Montague-King®



# MALAMALA GAME RESERVE



## New Year's Menu

### STARTERS

- Butternut and cinnamon soup (V)
- Smoked salmon gravlax with mustard and dill sauce

### MAINS

- Roast sirloin with Yorkshire pudding
- Roast turkey roll with cranberry sauce
- Honey and ginger glazed gammon
- Apple, brie and onion tart (V)
- Green beans with toasted almonds (V)
- Roast sweet potato wedges (V)

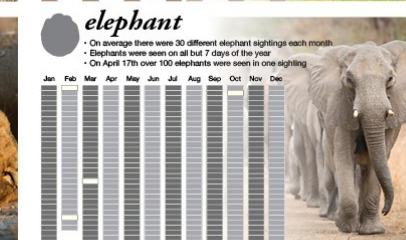
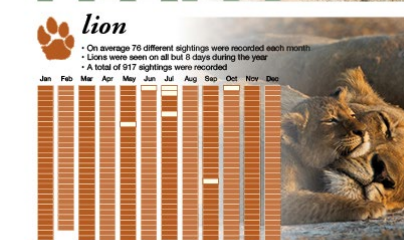
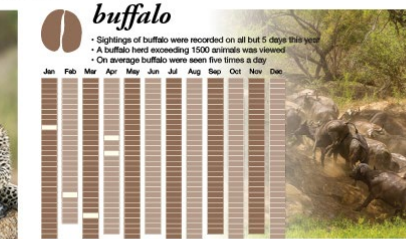
### DESSERTS

- Fresh peeled litchis
- Fruit salad
- Ice cream with chocolate or caramel sauce
- Cheese and crackers

(V) - Vegetarian

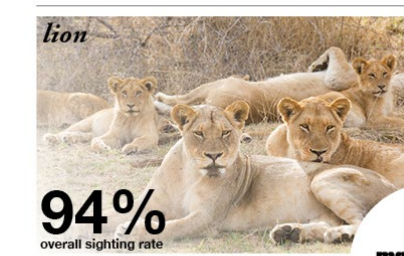
## MALAMALA GAME RESERVE - BIG 5 GAME VIEWING STATISTICS

Sightings of the Big 5 were recorded on all but 16 days in 2016



Blank spaces indicate days on which sightings were not recorded. Please note we do not publish statistics of mino sightings at Malamala owing to the vulnerability of these animals as a result of rampant poaching in Southern Africa.

## FROM 1993 TO 2016 - 23 YEARS OF WILDLIFE AT MALAMALA GAME RESERVE



Please note we do not publish statistics of mino sightings at Malamala owing to the vulnerability of these animals as a result of rampant poaching in Southern Africa.



Photograph by guest Peter Short. This powerful image of an elephant bull charging towards a pack of Cape hunting dogs claimed top spot in our annual Guest Photographic Competition. It reemphasises the idea that nothing reduces us to our proper dimensions more rapidly and completely than spending time with elephants.

## April 2018

March 2018						
S	M	T	W	T	F	S
1	2	3	4	5	6	7
8	9	10	11	12	13	14
15	16	17	18	19	20	21
22	23	24	25	26	27	28
29	30					

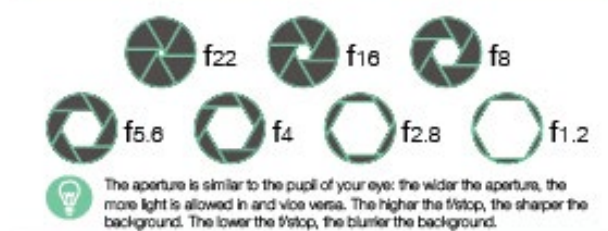
May 2018						
S	M	T	W	T	F	S
1	2	3	4	5	6	7
8	9	10	11	12	13	14
15	16	17	18	19	20	21
22	23	24	25	26	27	28
29	30	31				

June 2018 July 2018 August 2018 September 2018 October 2018 November 2018 December 2018 January 2019 February 2019 March 2019

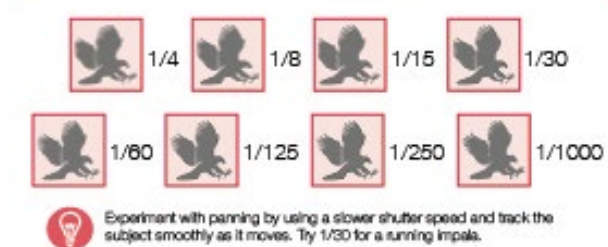


## PHOTOGRAPHIC CHEATSHEET

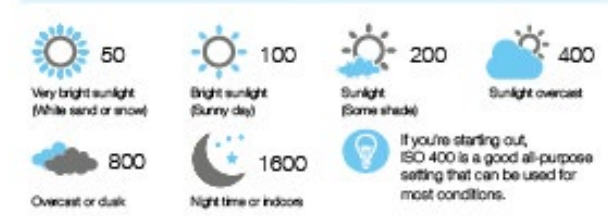
### APERTURE



### SHUTTER SPEED



### ISO



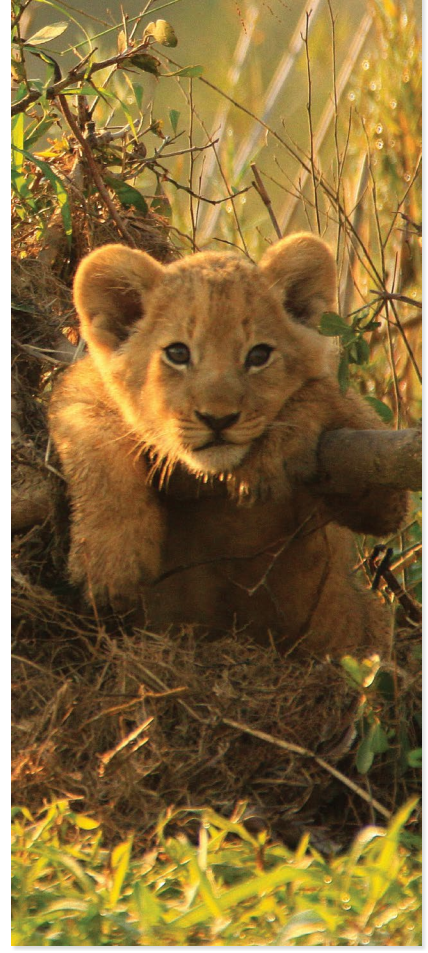
## JANUARY 2017 GAME REPORT



## OCTOBER 2017 GAME REPORT



## South Africa





**Best new smartphones of 2015:  
FASTER AND THINNER ...  
BUT HOW'S THE BATTERY LIFE?**

**Samsung Galaxy S4**

**Levels:**

- Range of innovations
- Super fast processor
- Great battery life

**Notes:**

- Incoming gimmicks
- Tackling for more
- Design lacks class

**Verdict:** Samsung's Galaxy S4 is a 12mp camera that's marginally better than the 13mp camera of the iPhone 6, but the S4's battery life is a real issue. Samsung has tried to make the S4's battery life better, but it's still not as good as the iPhone 6's. Samsung has tried to make the S4's battery life better, but it's still not as good as the iPhone 6's.

**Sony Xperia Z Ultra**

**Levels:**

- Great display
- Waterproof is cool
- Good battery life

**Notes:**

- It's enormous
- Average camera
- No flash

**Verdict:** Sony's Xperia Z Ultra is a 21mp camera that's marginally better than the 13mp camera of the iPhone 6, but the Z Ultra's battery life is a real issue. Sony has tried to make the Z Ultra's battery life better, but it's still not as good as the iPhone 6's. Sony has tried to make the Z Ultra's battery life better, but it's still not as good as the iPhone 6's.

**iPhone 6**

**Levels:**

- Stylish design
- Solid hardware
- Excellent software

**Notes:**

- Screen not full HD
- Expensive

**Verdict:** The iPhone 6 is a stylish design that's marginally better than the 13mp camera of the iPhone 6, but the iPhone 6's battery life is a real issue. Apple has tried to make the iPhone 6's battery life better, but it's still not as good as the iPhone 6's. Apple has tried to make the iPhone 6's battery life better, but it's still not as good as the iPhone 6's.

**Best new TVs to buy in 2015:  
THE DEFINITIVE  
BEST TVS TO BUY**

**Sony KD-65X9005B**

**Levels:**

- Best design
- Superb image performance
- Some impressive features

**Notes:**

- Limited catch-up TV services
- Clunky interface
- No 3D

**Verdict:** Sony's KD-65X9005B is a 65-inch TV that's marginally better than the 13mp camera of the iPhone 6, but the KD-65X9005B's battery life is a real issue. Sony has tried to make the KD-65X9005B's battery life better, but it's still not as good as the iPhone 6's. Sony has tried to make the KD-65X9005B's battery life better, but it's still not as good as the iPhone 6's.

**Bang & Olufsen BeoVision Avant**

**Levels:**

- Gorgeous, hand-crafted design
- Excellent Picture Quality
- Outstanding sound quality and flexibility

**Notes:**

- Not much Smart TV content
- No 4K/8K, no HDR
- No 3D

**Verdict:** Bang & Olufsen's BeoVision Avant is a 65-inch TV that's marginally better than the 13mp camera of the iPhone 6, but the BeoVision Avant's battery life is a real issue. Bang & Olufsen has tried to make the BeoVision Avant's battery life better, but it's still not as good as the iPhone 6's. Bang & Olufsen has tried to make the BeoVision Avant's battery life better, but it's still not as good as the iPhone 6's.

**Panasonic TX-50AX802**

**Levels:**

- Beautiful picture performance
- Very strong mid and high end
- Elegant design

**Notes:**

- No support for Netflix 4K
- Bluetooth remote control

**Verdict:** Panasonic's TX-50AX802 is a 50-inch TV that's marginally better than the 13mp camera of the iPhone 6, but the TX-50AX802's battery life is a real issue. Panasonic has tried to make the TX-50AX802's battery life better, but it's still not as good as the iPhone 6's. Panasonic has tried to make the TX-50AX802's battery life better, but it's still not as good as the iPhone 6's.

**LIQUI MOLY RACING**  
MOTORCYCLE PRODUCTS

**UNLEASH YOUR ENGINE'S TRUE POTENTIAL**

[WWW.LIQUI-MOLY.CO.ZA](http://WWW.LIQUI-MOLY.CO.ZA)

**We are driven...**

**to make your brand stand out.**

Whether you are packing fresh, ESL, Steri or Long Life dairy products Nampak Liquid understands that your product is your most important asset. Our packaging will make your brand stand out and will protect it along every step of the supply chain. Our quality and service is customer and partnership driven.

We offer a range of PET and HDPE bottles and closures, cutting edge design capability, internationally accredited packaging, as well as filling and handling systems. This is backed by the world-class scientific expertise of Nampak Research & Development.

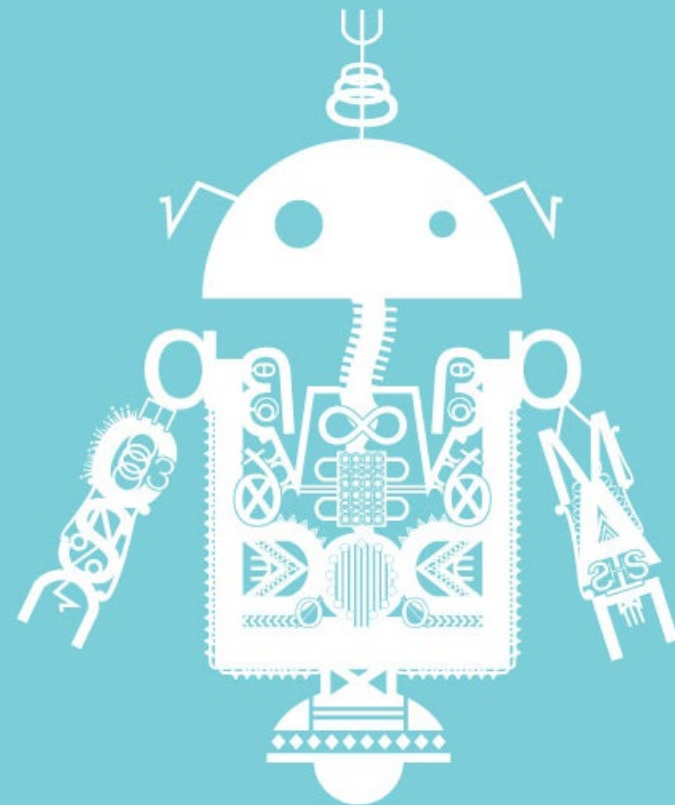
Nampak Liquid, Africa's leading supplier of plastic packaging for liquids has developed an exceptional track record in pioneering the introduction of in-plants in South Africa. We've been at the forefront of game-changing innovations, such as the ESL milk bottle and the multi-layer UHT milk bottle and operate a number of world-class facilities for dairy customers.

For outstanding packaging solutions, contact us on +27 (0)11 249 5200  
[www.nampak.com](http://www.nampak.com)

**Nampak Liquid**  
packaging excellence



OTHER



Halala!  
**Promaths**  
Halala!

For more than 10 years,  
**#Promaths**  
**#Kutlwanong**  
has helped over  
7000 township students  
access professional  
**careers**

If you are in your final  
year of study or a working  
professional, we want  
to hear **your story**.  
**We want to understand the  
difference we have made.**

**Promaths**  
Workplace



Hi Tshepiso,  
Join us at the BBC Lifestyle's  
Great South Bake Off press day on  
**THURSDAY 18TH AUGUST 2016**

Kindly note that we have arranged transportation to the set.  
The bus will be waiting at The Zone in Rosebank parking lot  
(cnr Cradock Ave and Baker Street) and will leave at 10am promptly.

All of the interviews conducted will be under strict embargo and we kindly ask you  
to sign an NDA to that effect, which will be provided on the day.

The interviews will run as three 20 minute round tables with all the talent  
followed by 1 to 1 interviews, upon request, with the judges and presenters. The  
programme for the day is scheduled to end at 3pm, at which time  
we'll make our way back to The Zone in Rosebank.

Thuso (073 893 1253) and  
Thco (083 373 1329) will be hosting you.

Looking forward to a splendid day of cake and conversation.



  
SARAH KOBAL

.....  
Freelance  
Graphic & Web Design